

House and land package.

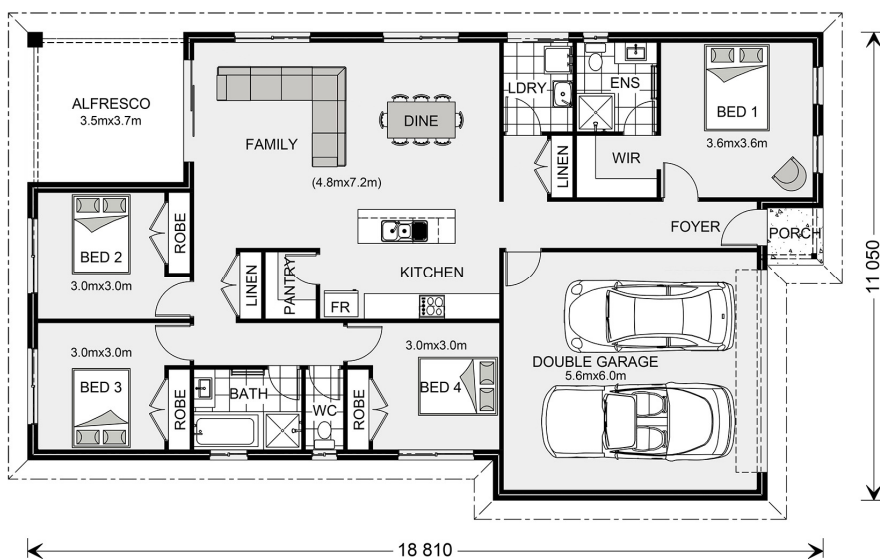


House and land package from \$536,237*

Address: Lot 12 Serene Terrace, Drysdale

Inclusions:

- + Hamptons Facade
- + Double Glazed Windows & Sliding Doors
- + Carpet & Tiles throughout
- + 900mm Westinghouse Oven, Cooktop & Rangehood - Dishlex Dishwasher
- + 2550mm (8 foot 6) High Ceilings and Braemar Gas Ducted Heating
- + Fixed Site Costs and Landscaping



*Images and photographs may depict fixtures, finishes and features either not supplied by G.J. Gardner Homes or not included in any price stated. These items include furniture, swimming pools, pool decks, fences, landscaping - including planter boxes, retaining walls, water features, pergolas, screens and decorative landscaping items such as fencing and outdoor kitchens and barbeques. For detailed home pricing, please talk to a new homes consultant.

Nova 190 - Hamptons

4 bedrooms, 2 bathrooms, 2 cars

Give us a call or drop in for a chat today.

Office:

Call: .

Email: .

Or visit gjgardner.com.au

Welcome **home.**

G.J. Gardner. HOMES